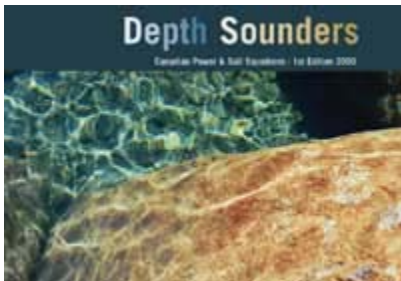


Ripple Rock Squadron

Depth Sounders



Description

This mini-course will introduce the recreational boater to the various types of echolocation devices that are common on smaller recreational vessels. In it you will find information that is often missing from the manuals and glossy brochures of the market-place.

Depth Sounders have evolved into compact electronic aids that allow you to determine a great deal of information about the seabed beneath your boat. They are at once a safety device, a navigational guide, a method of determining the makeup of the bottom, and a view of fish and plant life. We will look at the history and development of depth sounders, the various types of units available today, and discuss how they are best used. By understanding their principles of operation and the purposes of the different features, you will be able to select the unit that best fits your needs and pocketbook.

All types of boaters; recreational, sport fishermen and commercial, can benefit from depth sounders. We hope this short course will be of value to you.

TOPICS: Interpreting the Display, Controls, Adjustments, Features, Technical Features, Advanced Types of Depth Sounders, Installing a Depth Sounder, Navigating with the Depth Sounder, Troubleshooting.